

Installation Manual for IDAS AD-42 DS Adapter

Prepared by ICAS Enterprises

Product Description:

Name: IDAS AD42-DS drop-in adapter

Threads: M42 female – M42 female, with camera-rotation-function provided

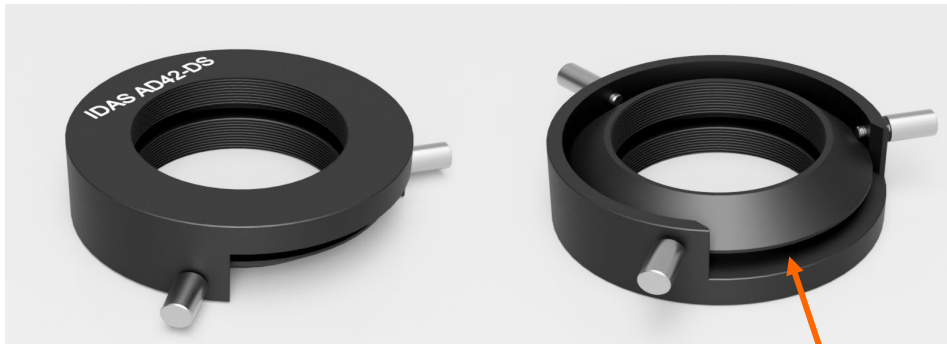
Total flange-to-flange length: 19.85mm (becomes 19.5mm when a filter is used)

Suitable Drop-in IDAS filters: IDAS DS series (GNB DS, HEUIB-II DS, NGS1 DS, NB1 DS, Clear DS & more to come)

AD42-DS

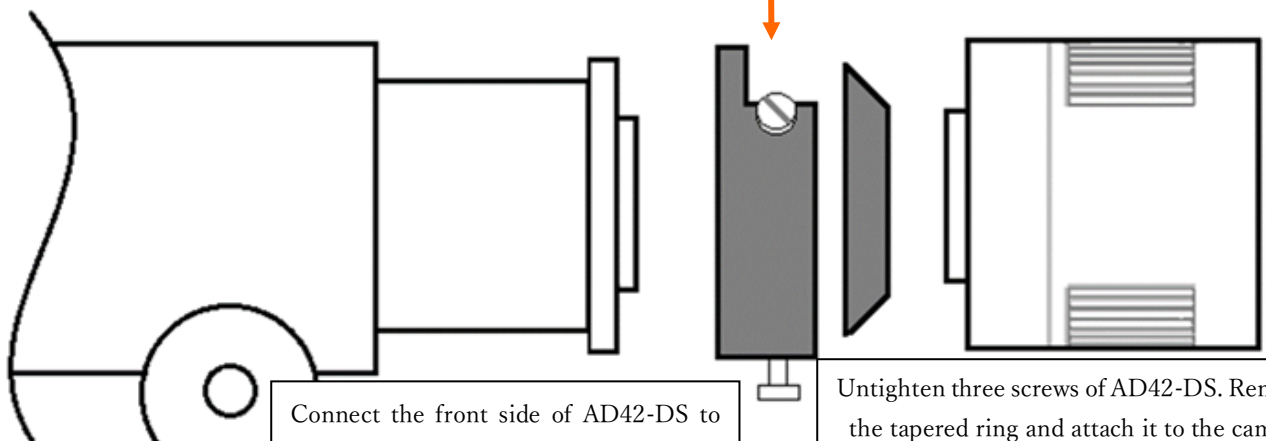
Front side

Rear side (tapered ring)



Connection of AD42-DS to telescope and camera:

Inlet for a DS filter



Connect the front side of AD42-DS to the telescope.

Untighten three screws of AD42-DS. Remove the tapered ring and attach it to the camera. Then, put it back and fix it to the AD42-DS by tightening three screws. You can adjust the orientation of the camera when re-attaching the tapered ring.